

# Natura 2000 monitoring tool development

## Monitoring Impacts on Biodiversity Conservation Policies in a Natura 2000 landscape across inter-national borders

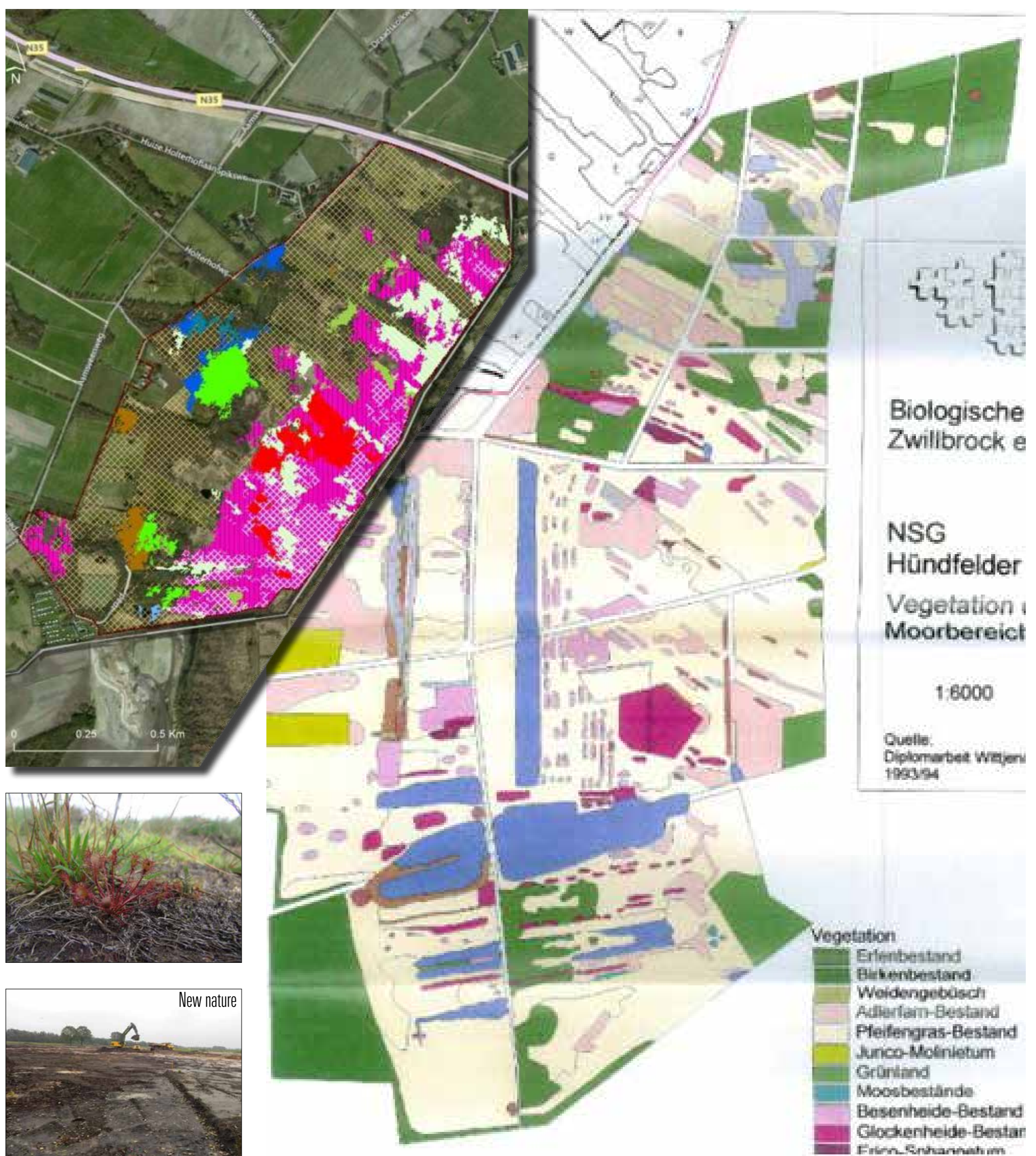
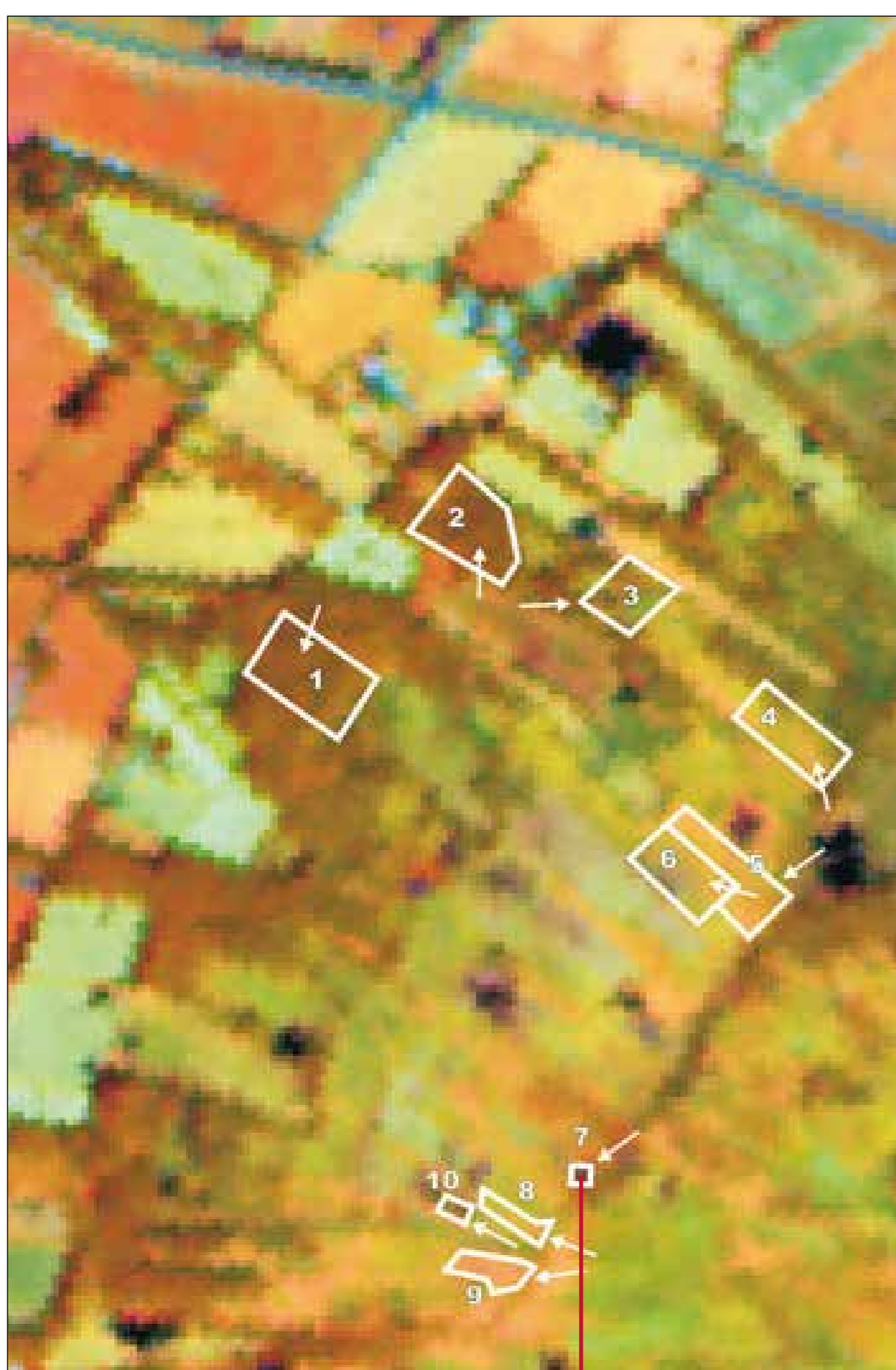
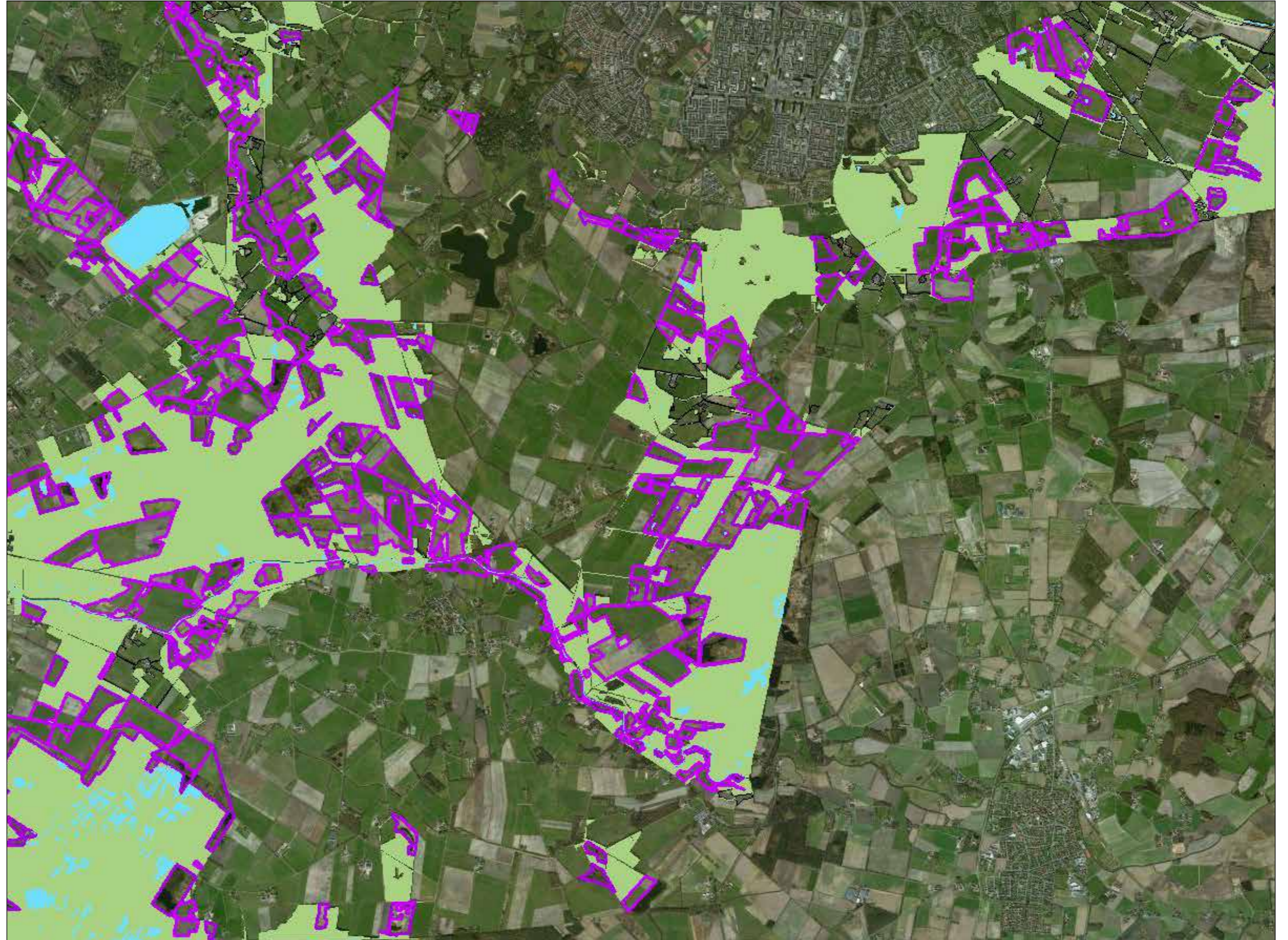
### Potential research topics:

- Develop a monitoring tool for Europe
  - robust and cost effective mapping habitats, comparing sensors, accuracy and costs
  - OBIA, MLC, VII, Field surveys
- Eco-Corridors and Biodiversity Conservation Contrasts between East-Overijssel (NL) and West-Munsterland (De), Vegetation Change and Potential vegetation mapping, developing Biological Criteria to assess management practices.

Biologically and physically both sides of the International border are the same; land tenure, land use zoning and nature conservation history contrasts are reflected in landscape fragmentation and bio-diversity. Aggregation of areas and implementing buffer zones and eco-corridors are policies to redress historical fragmentation and its bio-diversity impacts.

### Methodology

Conventional RS imagery; secondary geo-data like topo-maps, cadastral maps, land use zoning maps, plant and animal inventories; spatial modelling;



### Authors:

Drs. Eduard Westinga  
Dr. Hein van Gils  
Dr. Thomas Groen

